



We are family
BERNINBRADFORD

Born in Bradford (BiB)

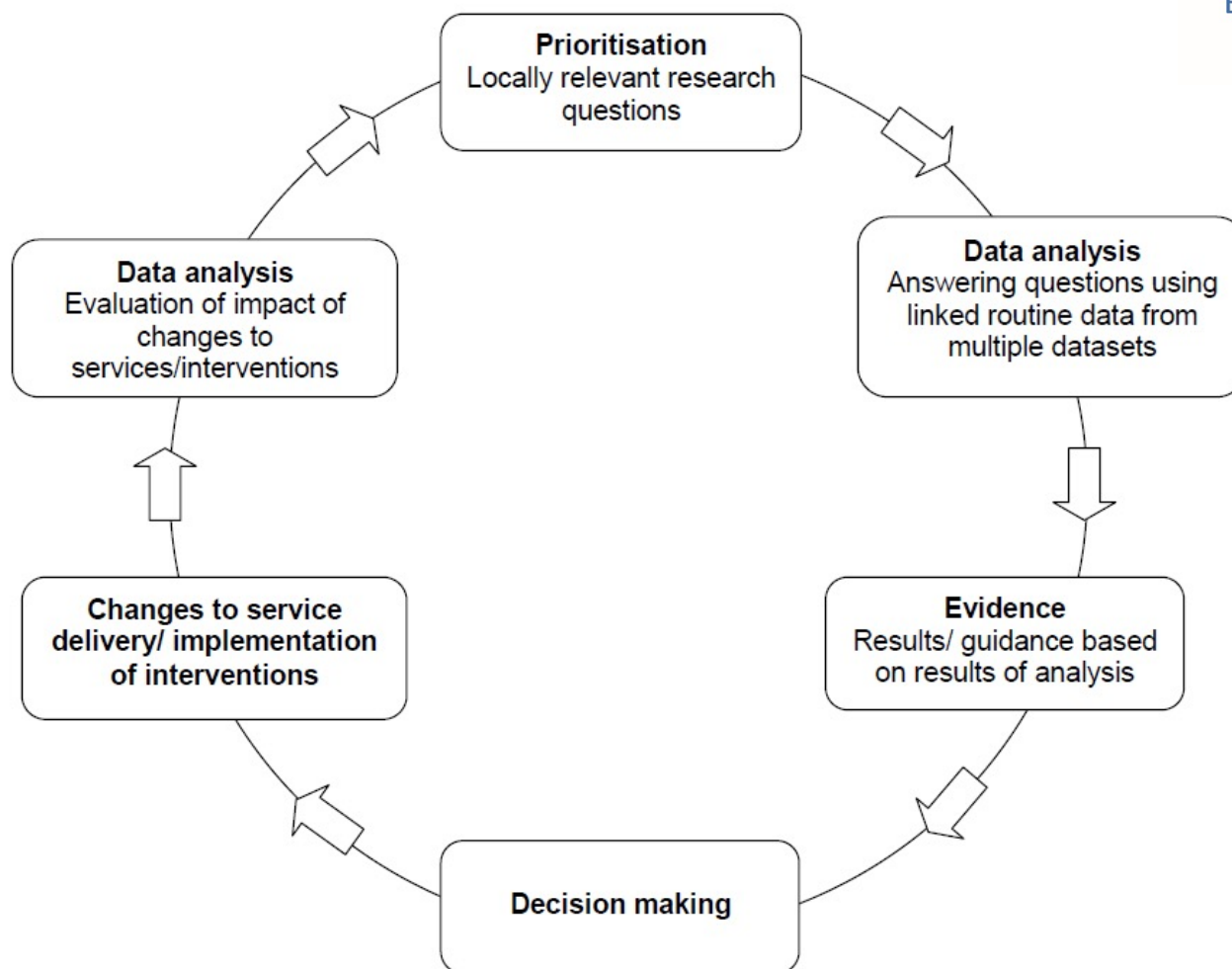
Born in Bradford (BiB) is one of the largest research studies in the world, tracking the lives of almost 50,000 Bradfordians to find out what influences the health and wellbeing of families.





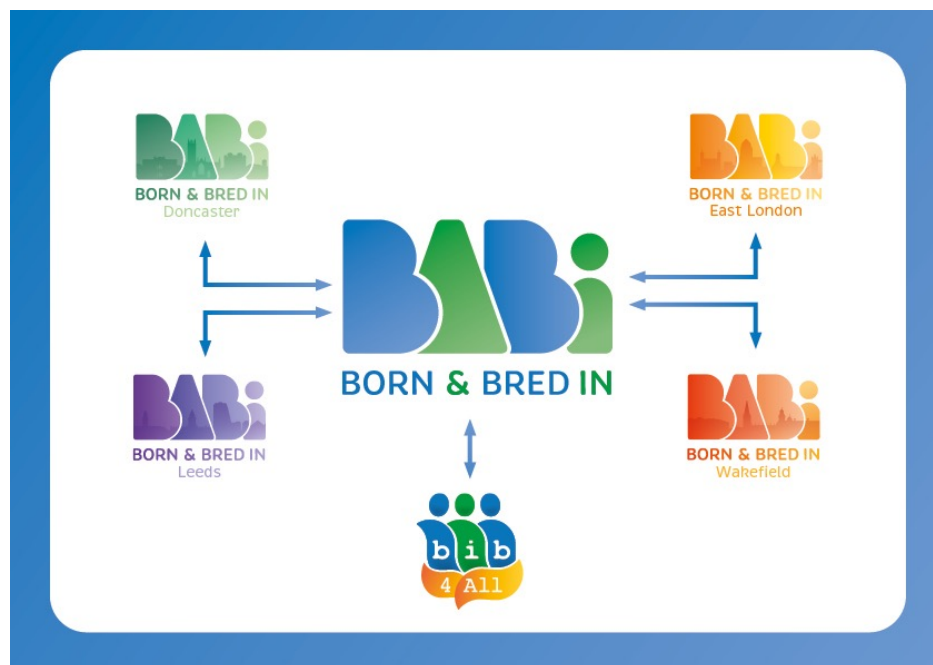
- *‘Why aren’t we doing this for all pregnant mums and babies?’*
- This led to the development of BiB4All.





Bryant, M. and Bridges, S. (2021). *BaBi local health intelligence model* (unpublished, in development)

What is the Born and Bred in (BaBi) Network?



Born in Bradford's BiB4All is the co-ordinating centre and the pioneering site for a new approach to connecting routine data at a local level.

Primary Aims of the BaBi Network

- ❖ To harness the power of routinely collected data from multiple services and organisations to build a clearer picture of children's and families lives over time.
- ❖ To create a series of electronic cohorts across the country that can be used locally as health intelligence tools and shape services .
- ❖ To bring the meta-cohort together as one to answer research questions of national relevance and common interest.



=





BORN & BRED IN
META COHORT



Challenges

- ❖ Developing and envisioning a meta-cohort
- ❖ Differing interpretations and definitions
- ❖ Varying electronic patient record systems
- ❖ Limitations of routine data

Benefits & Learning for the LPS Community

- ❖ Sustainability of the model-power of systems change approach
- ❖ Sharing of skills and expertise- clear communication
- ❖ Importance of positive working relationships
- ❖ Partnership and collaboration

Acknowledgements

The BaBi network is only possible thanks to the generosity of women and babies who joined the BaBi family and the enthusiasm and dedication of the midwives who invited them. We are grateful to all the women, babies, health professionals and researchers who make BaBi happen.

This work is independent research supported by the National Institute for Health Research Yorkshire and Humber ARC as part of the BaBi network. The views expressed in this publication are those of the author(s) and not necessarily those of the National Institute for Health Research, or the Department of Health and Social Care.

Meet the BaBi Network Co-ordinating Centre Team:



Dr. Maria Bryant

Academic Director



Dr Diane Farrar

Director of Clinical and Research
Governance



Sally Bridges

Programme Director



Dr. Kayley Ciesla

Programme Co-ordinator and
Senior Research Fellow

For further information on BaBi Network please visit:

<https://sites.google.com/nihr.ac.uk/babi/babi-sites/babi-bradford>

For further questions or queries please contact: Kayley.ciesla@bthft.nhs.uk

Thank You for Listening 😊