

# Partnerships facilitate policy translation – a case study from *Growing Up in New Zealand*

Centre for Longitudinal Research – *He Ara ki Mua*  
University of Auckland  
New Zealand

Professor Susan Morton

CLOSER

January 2022

[s.morton@auckland.ac.nz](mailto:s.morton@auckland.ac.nz)  
[www.growingup.co.nz](http://www.growingup.co.nz)



# The *Growing Up in New Zealand* study

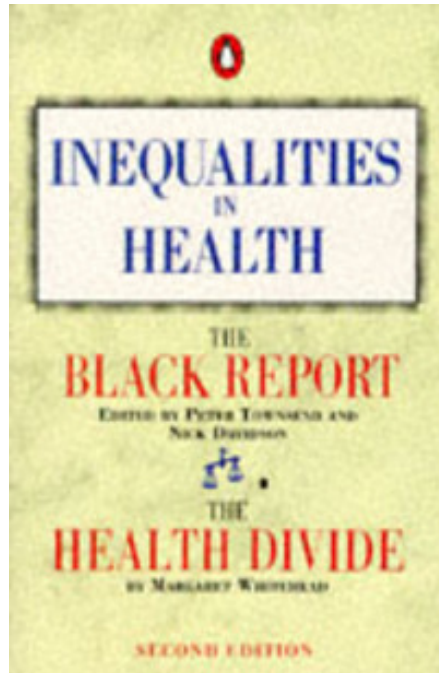
To provide contemporary population relevant evidence about developmental trajectories for 21<sup>st</sup> century New Zealand children in the context of their families and whānau.

- **6853 children** recruited before their birth in 2009/2010 – via their pregnant mothers (6823) and fathers/partners
- Cohort recruited to ensure adequate explanatory power to consider trajectories for Māori (1 in 4), Pacific (1 in 5) and Asian (1 in 6) children, and multiple ethnic identities (changing over time)
- Cohort is broadly generalisable to current NZ pre-schoolers (diversity of ethnicity and family SES)

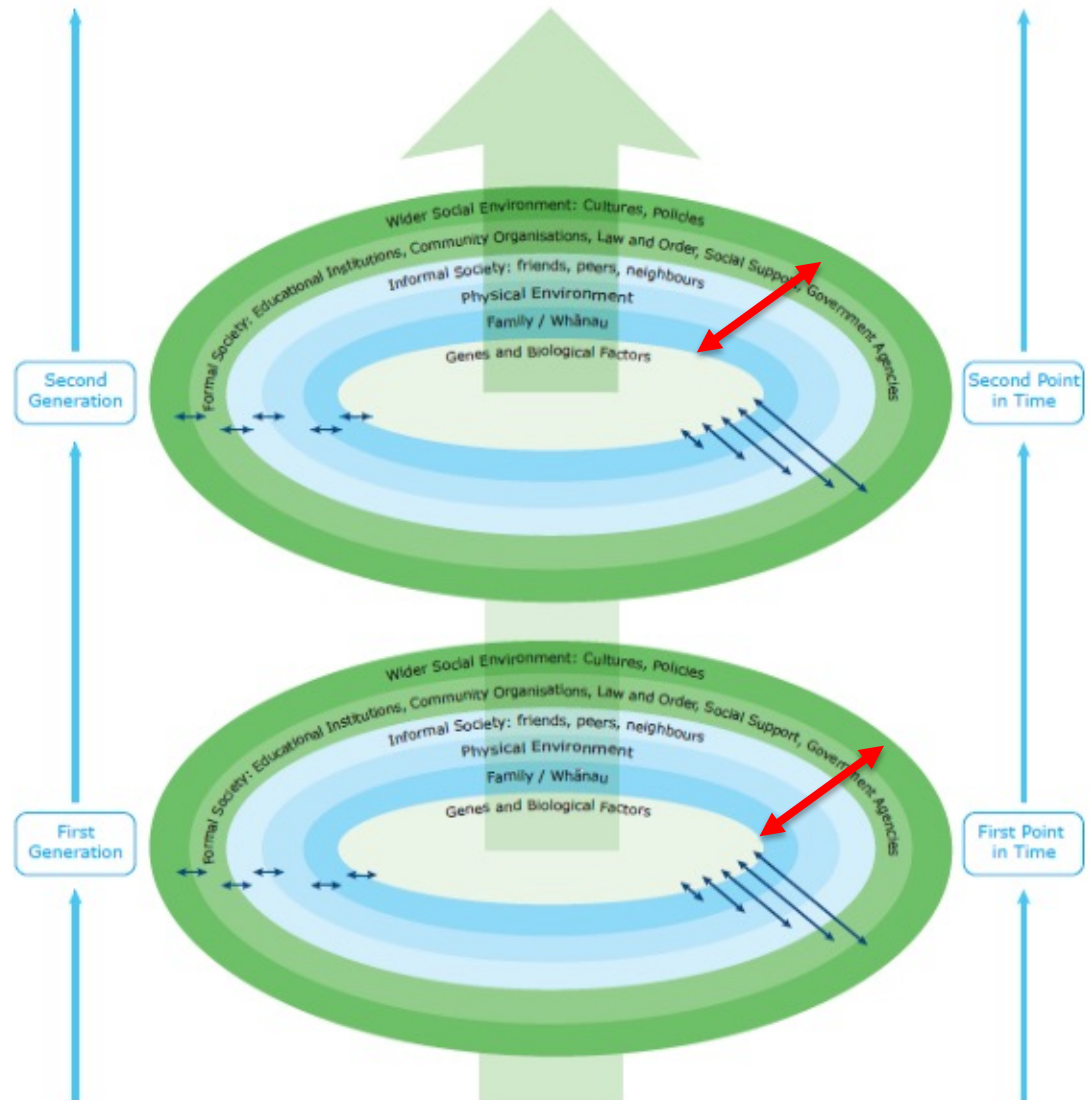


**Providing robust scientific evidence to inform cross-sectoral policy about “*what works*” for wellbeing**

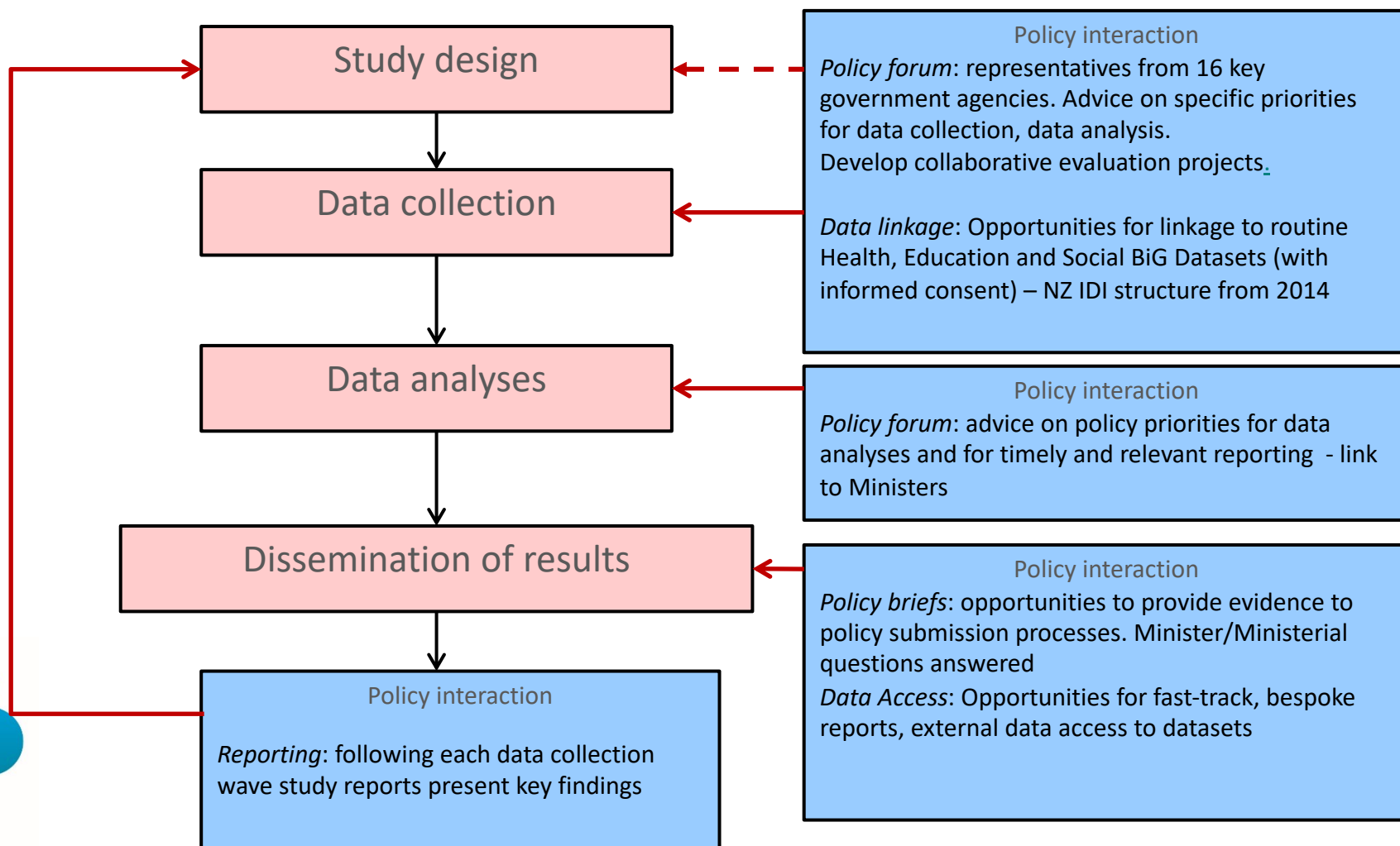
# Broad social determinants of wellbeing framework



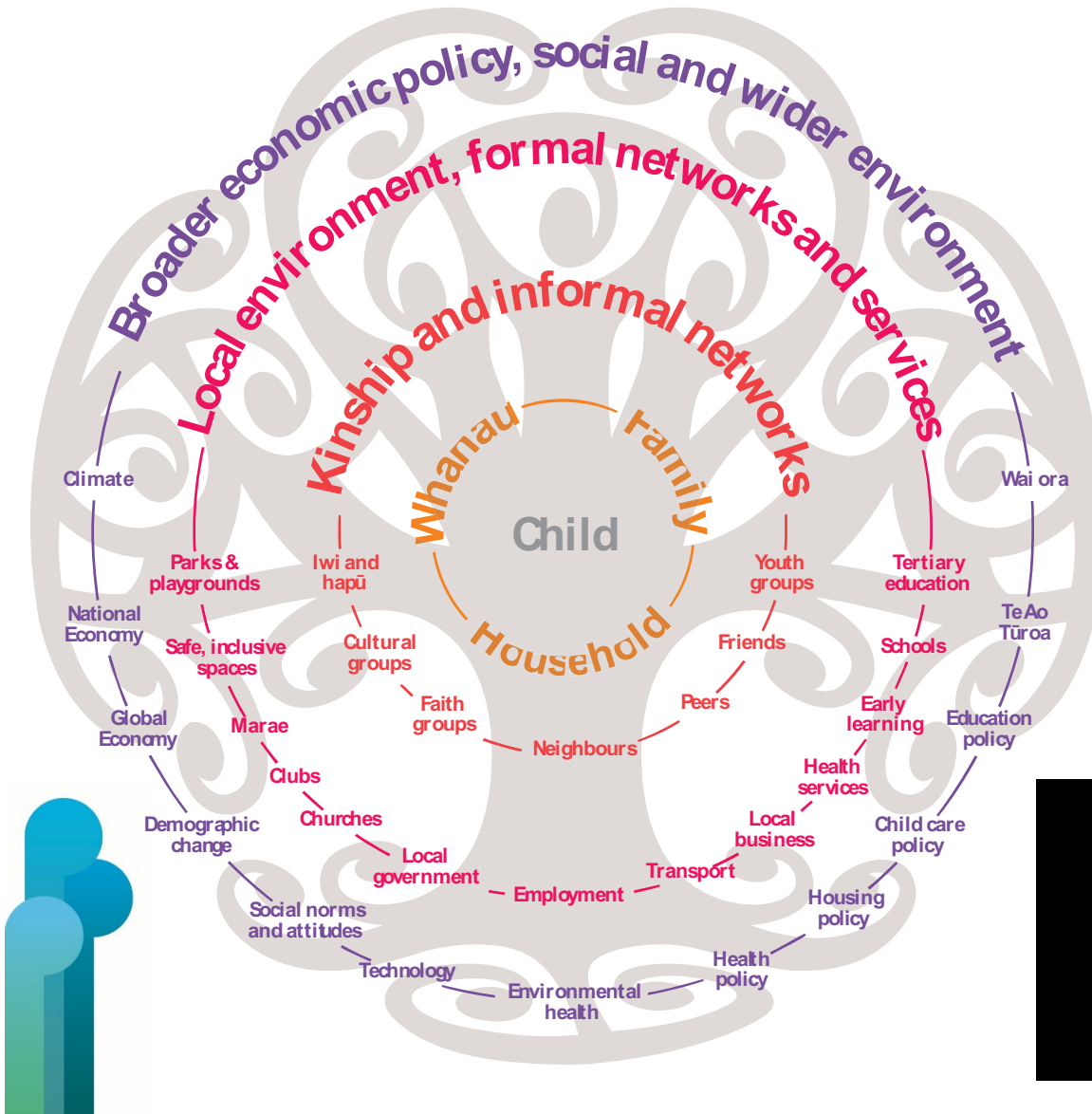
Mind the gap



# Partnerships to facilitate translation



# 2019 Child and Youth Wellbeing Framework (NZ Govt)



**Child and Youth  
Wellbeing**



# Domains in CYFW Strategy and Action Plan



CHILDREN and  
YOUNG PEOPLE  
are LOVED, SAFE  
and NURTURED



CHILDREN and  
YOUNG PEOPLE  
have WHAT  
they NEED



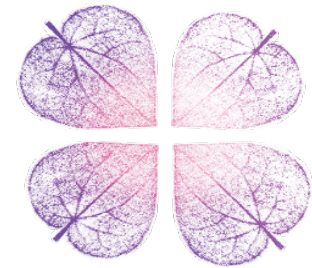
CHILDREN and  
YOUNG PEOPLE  
are HAPPY  
and HEALTHY



CHILDREN and  
YOUNG PEOPLE  
are LEARNING  
and DEVELOPING



CHILDREN and  
YOUNG PEOPLE  
are ACCEPTED, RESPECTED  
and CONNECTED



CHILDREN and  
YOUNG PEOPLE  
are INVOLVED  
and EMPOWERED



# NZ Child wellbeing - reality check



Mind the gap

C  
U  
R  
R  
E  
N  
T

Currently, New Zealand ranks 38<sup>th</sup> of 41 developed countries for overall child wellbeing

28.5% of NZ children's deaths are due to unintentional injury

Almost one third of NZ children live in poverty

NZ children feel burdened with negative racial stereotypes in schools

12% of NZ children are obese  
NZ has worst teen suicide rate in world

NZ has one of the highest rates of teenage pregnancy

Wide inequalities exist in NZ wellbeing statistics

Mortality rates highest for Māori followed by Pacific people

28% Māori and 26% Pacific children live in low-income households

25.5% Māori students have experienced ethnic discrimination

17% Māori and 30% Pasifika children are obese  
Teen suicide rate is highest for Māori

Teenage pregnancy rate highest for Māori and Pasifika

MIND THE GAP

F  
U  
T  
U  
R  
E

New Zealand will be the best place in the world to be a child when all children and young people:

Are loved, nurtured and safe





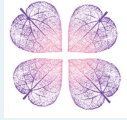

Have what they need

Belong, contribute and are valued

Are happy and healthy

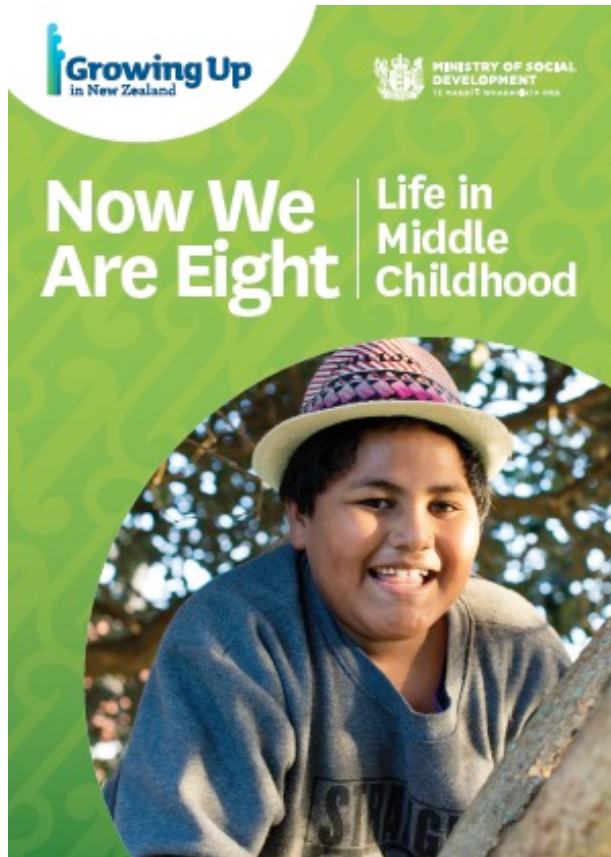
Are learning and developing

# Growing Up contributions to close the gap

| CYWF Domains   | CYWF Indicators   |
|--|---|
|  <p>Accepted, respected and connected</p> | <p>Ability to be themselves; Sense of belonging; Discrimination; Bullying; Social support; Cultural identity; Languages</p>   |
|  <p>Have what they need</p>               | <p>Material wellbeing; Child poverty (hardship and income); Food insecurity; Housing quality; Housing affordability</p>   |
|  <p>Loved, safe and nurtured</p>          | <p>Feeling loved; Feeling safe; Family/whānau wellbeing; Injury prevalence; Harm against children; Quality time with parents</p>  |
|  <p>Learning and developing</p>           | <p>Early learning participation; Regular school attendance; Literacy, numeracy and science skills; Self-management skills; Youth in employment, education or training</p> |
|  <p>Involved and empowered</p>          | <p>Involvement in community; Representation of youth voice; Making positive choices; Criminal offending</p>   |
|  <p>Happy and healthy</p>               | <p>Prenatal care; Prenatal exposure to toxins; Subjective health status; Preventable admissions to hospital; Mental wellbeing; Self-harm and suicide</p>                  |



# Hearing the children's own voices at 8 years



MINISTRY OF BUSINESS,  
INNOVATION & EMPLOYMENT  
HIKINA WHAKATUTUKI



MANATŪ HAUORA



MINISTRY OF EDUCATION  
TE TĀHUHU O TE MĀTAURANGA



MINISTRY OF  
JUSTICE  
*Tāhū o te Ture*



MINISTRY OF SOCIAL  
DEVELOPMENT  
TE MANATŪ WHAKAHIATO ORA



Te Manatū mō ngā Iwi o te Moana-nui-ā-Kiwa



Te Puni Kōkiri  
MINISTRY OF MĀORI DEVELOPMENT



MANAAKITIA A TĀTOU TAMARIKI  
Children's  
Commissioner



... are **LOVED, SAFE**  
and **NURTURED**



... have **WHAT**  
they **NEED**



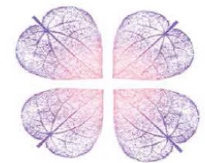
... are **HAPPY**  
and **HEALTHY**



... are **LEARNING** and  
**DEVELOPING**



... are **ACCEPTED, RESPECTED**  
and **CONNECTED**



... are **INVOLVED** and  
**EMPOWERED**

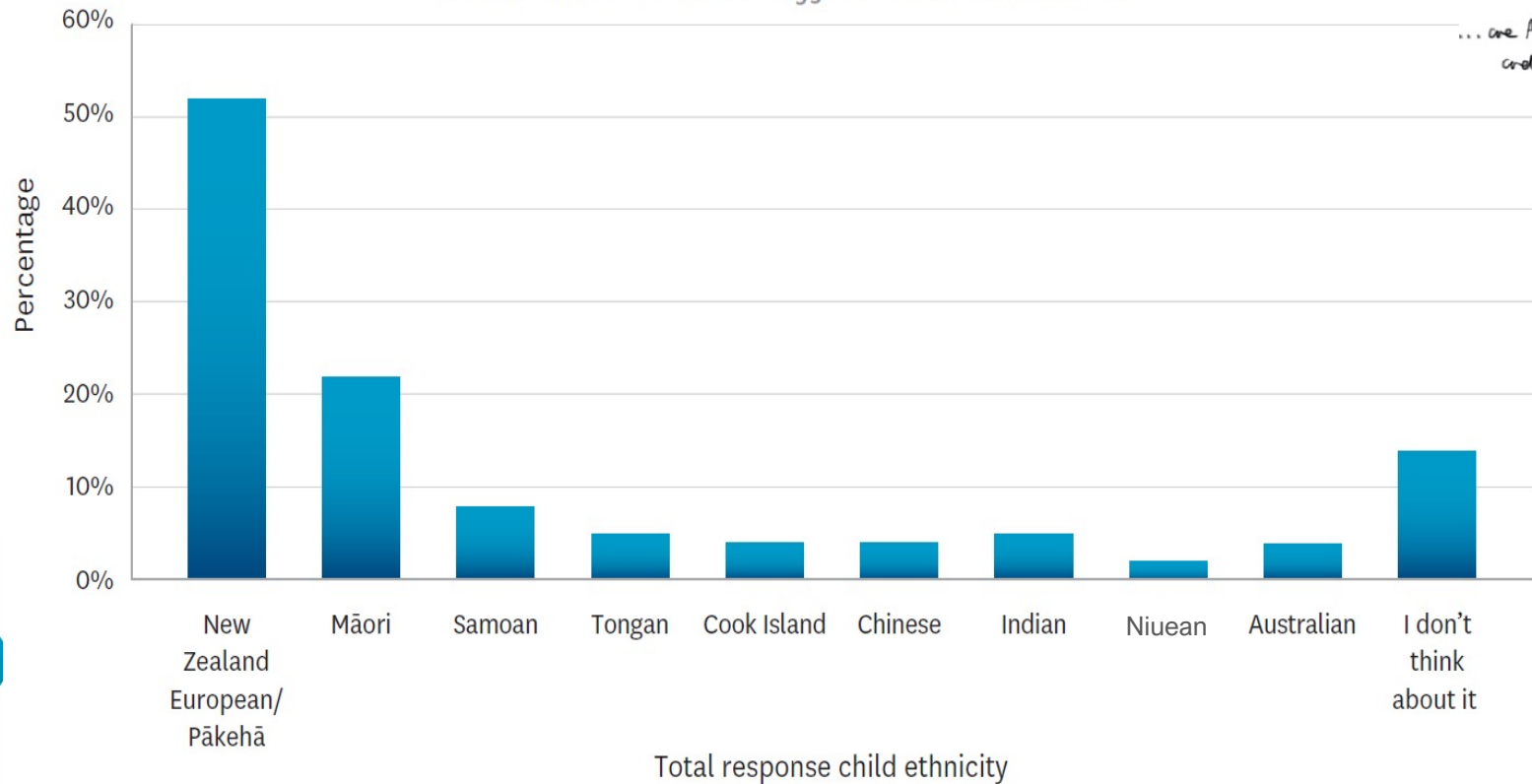
# Children's identity and cultural connectedness

*"I have friends from different cultures."*

*"I'm a different person from someone else, like I'm a different culture."*



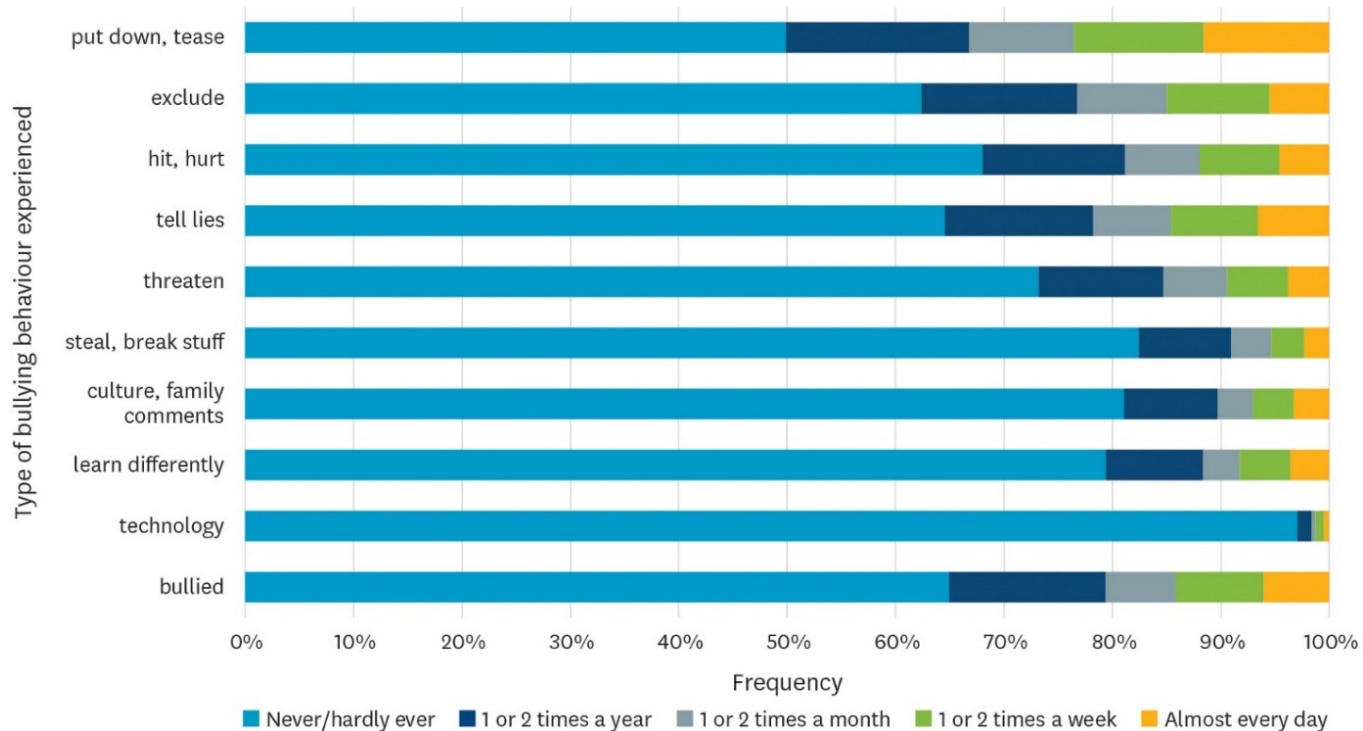
... we ACCEPTED, RESPECTED  
and CONNECTED



# Bullying - persistence

**35%** of children say they were bullied in the previous year

14% say they were bullied at least once a week. ... are ACCEPTED, RESPECTED and CONNECTED

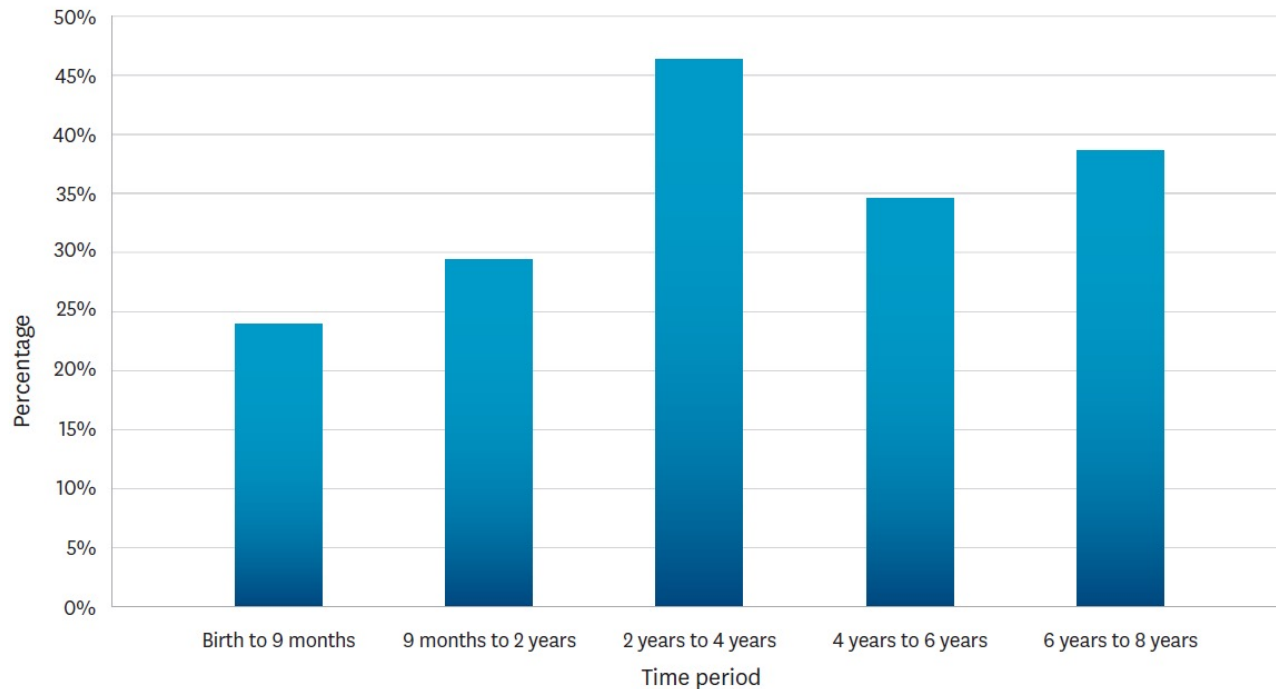


# Housing affordability and stability

**3/4** of children have moved at least once in their lives



... have **WHAT** they **NEED**





# Acknowledgements – all study children and families

*“Take care of our children. Take  
care of what they hear,  
take care of what they see, take  
care of what they feel.*

*For how the children grow, so will  
be the shape of Aotearoa.”*

Dame Whina Cooper

