



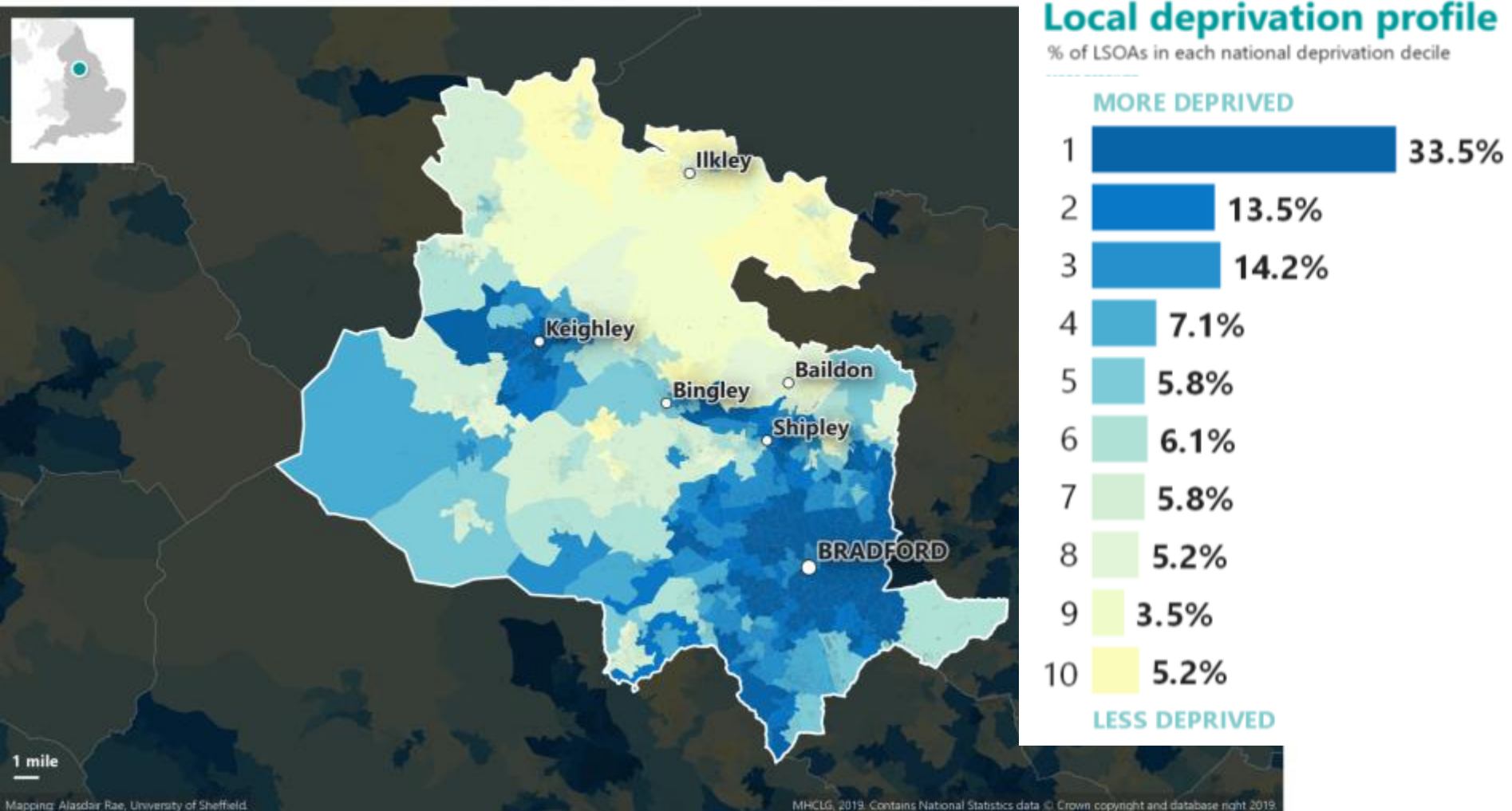
Born **in** Bradford:
people powered research

Prof **Rosie** McEachan | **@drrosiemc**



English Indices of Deprivation 2019

BRADFORD







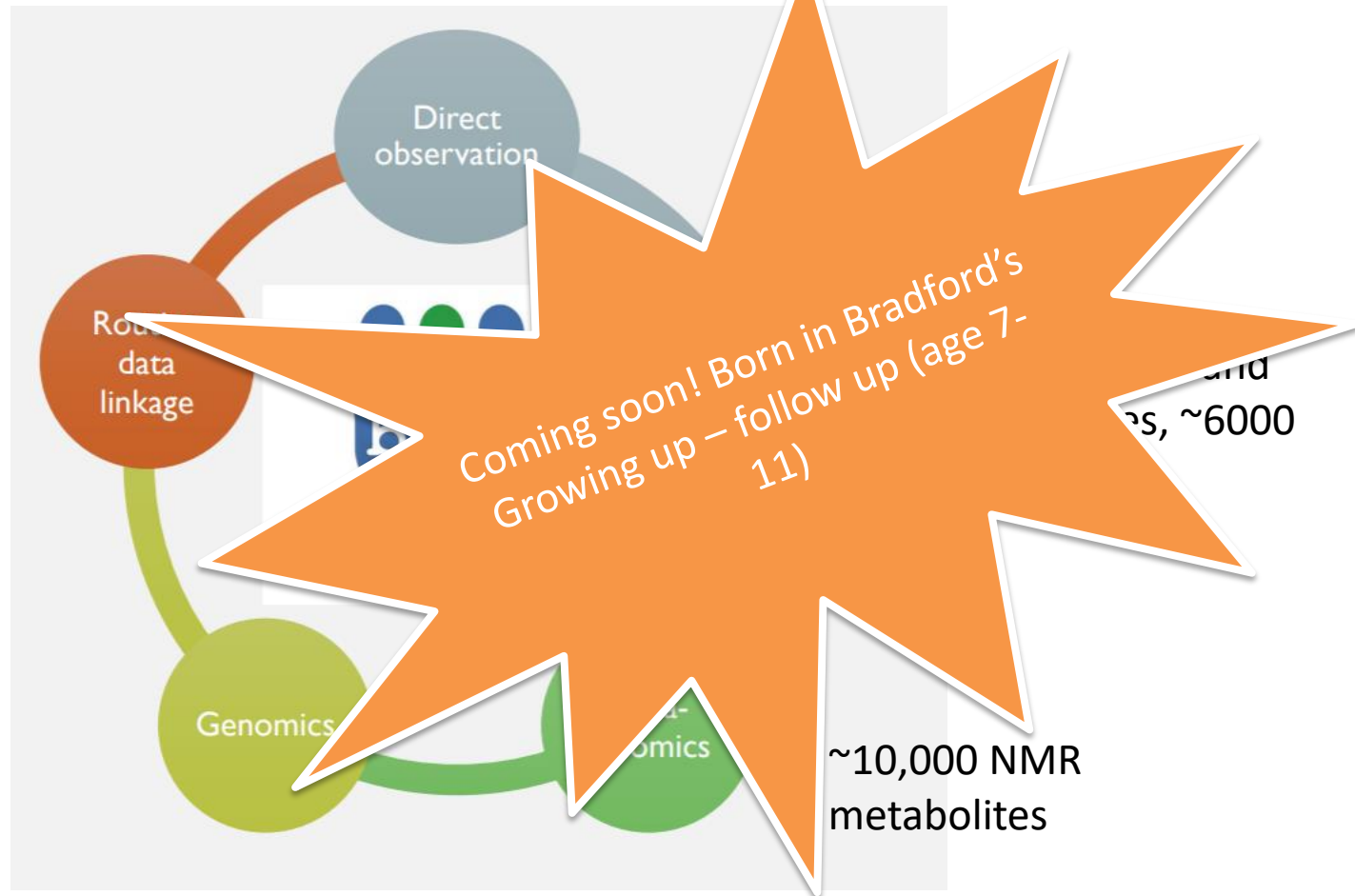




12,453 mothers, 3353 fathers,
13858 babies born 2007-2011

Health (98%) and
education (84%)

8610 mothers with
microarray genotype
data



Chips and crisps 'linked to low birth weight babies'

23 October 2012

f t e Share

Pregnant women who eat large amounts of chips and crisps could be harming their babies as much as smokers, a new European study suggests.

Women and babies from England, Denmark, Greece, Norway and Spain were tested for levels of a potentially toxic chemical found in fried potatoes.



Babies representing from the Born in Bra

ACRYLAMIDE

7th September 2015

EXCLUSIVE: Bradford research proves link between traffic pollution and low weight babies

Andrew Robinson [Andrew_TandA](#)
T&A Reporter



Most popular Mo

AIR QUALITY

www.borninbradford.nhs.uk

24th November 2015

Pregnant women in greenest areas of Bradford less likely to be depressed, new study reveals

Rob Lowson [RobL_TandA](#)
T&A Reporter



(2) View gallery

Most popular Most comment

GREEN SPACE

Human genome study finds many genes have no effect on human health

Many mutations or 'knock-outs' may have no effect on human health, researchers find. Science Editor Steve Connor explains

Steve Connor Science Editor | [@SteveConnor](#) | Saturday 5 March 2016 22:19 GMT | [0 comments](#)

f t e 0 shares

Like Click to follow The Independent Online



GENE KNOCK-OUTS

Evaluation of ethnic disparities in detection of depression and anxiety in primary care during the maternal period: combined analysis of routine and cohort data

Stephanie L. Prady, Kate E. Pickett, Emily S. Petherick, Simon Gilbody, Tim Croudace, Dan Mason, Trevor A. Sheldon and John Wright

Prady et al. *BMC Psychiatry* (2016) 16:99
DOI 10.1186/s12888-016-0805-x

BMC Psychiatry

Background
There are
mental dis

RESEARCH ARTICLE

Open Access



Variation and ethnic inequalities in treatment of common mental disorders before, during and after pregnancy: combined analysis of routine and research data in the Born in Bradford cohort

Stephanie L. Prady^{1*}, Kate E. Pickett¹, Simon Gilbody^{1,2}, Emily S. Petherick^{3,4}, Dan Mason³, Trevor A. Sheldon² and John Wright³

Baseline data

N=8991

Non-English
speaker (any
Ethnicity)
18%

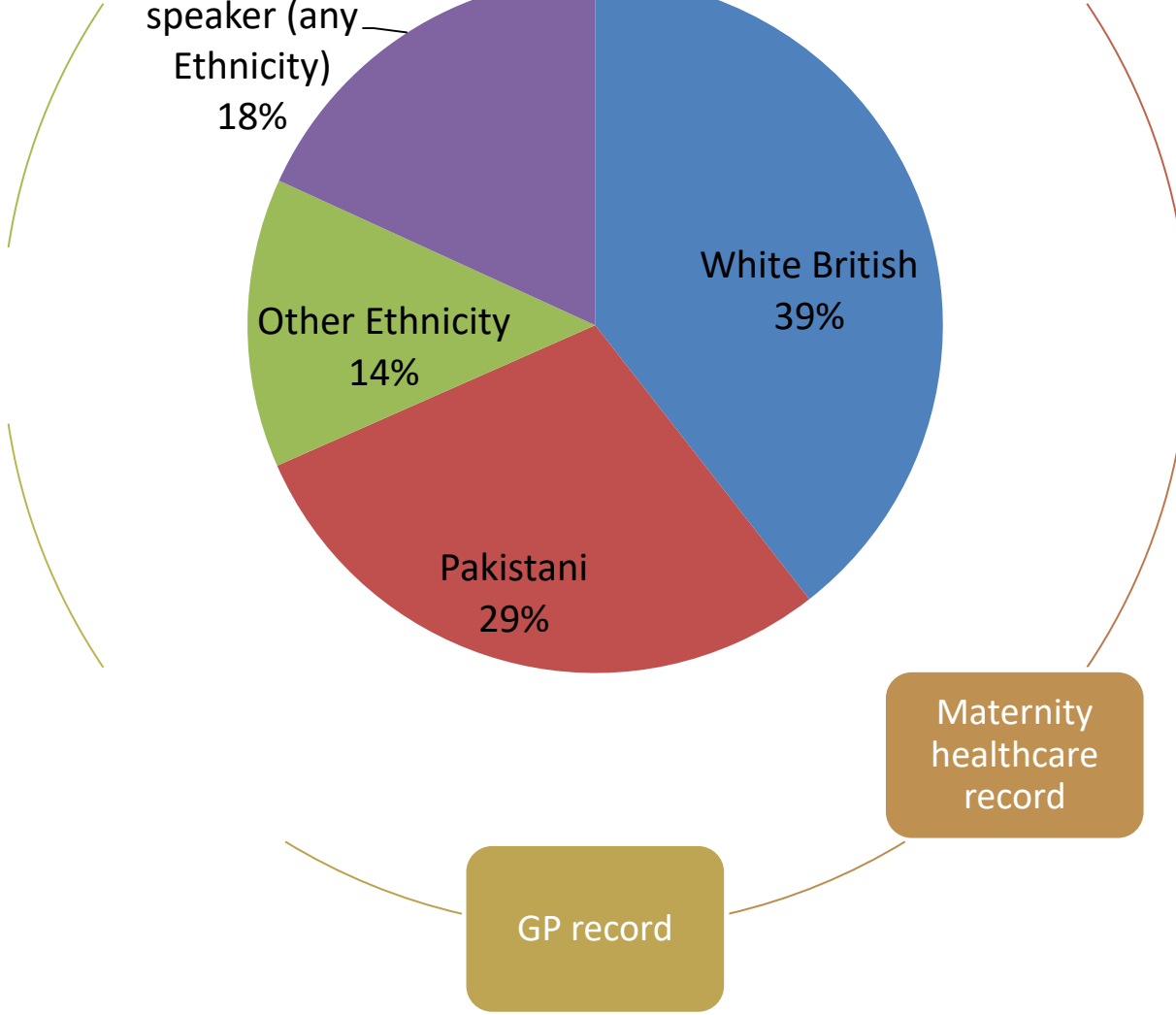
Other Ethnicity
14%

Pakistani
29%

White British
39%

Maternity
healthcare
record

GP record



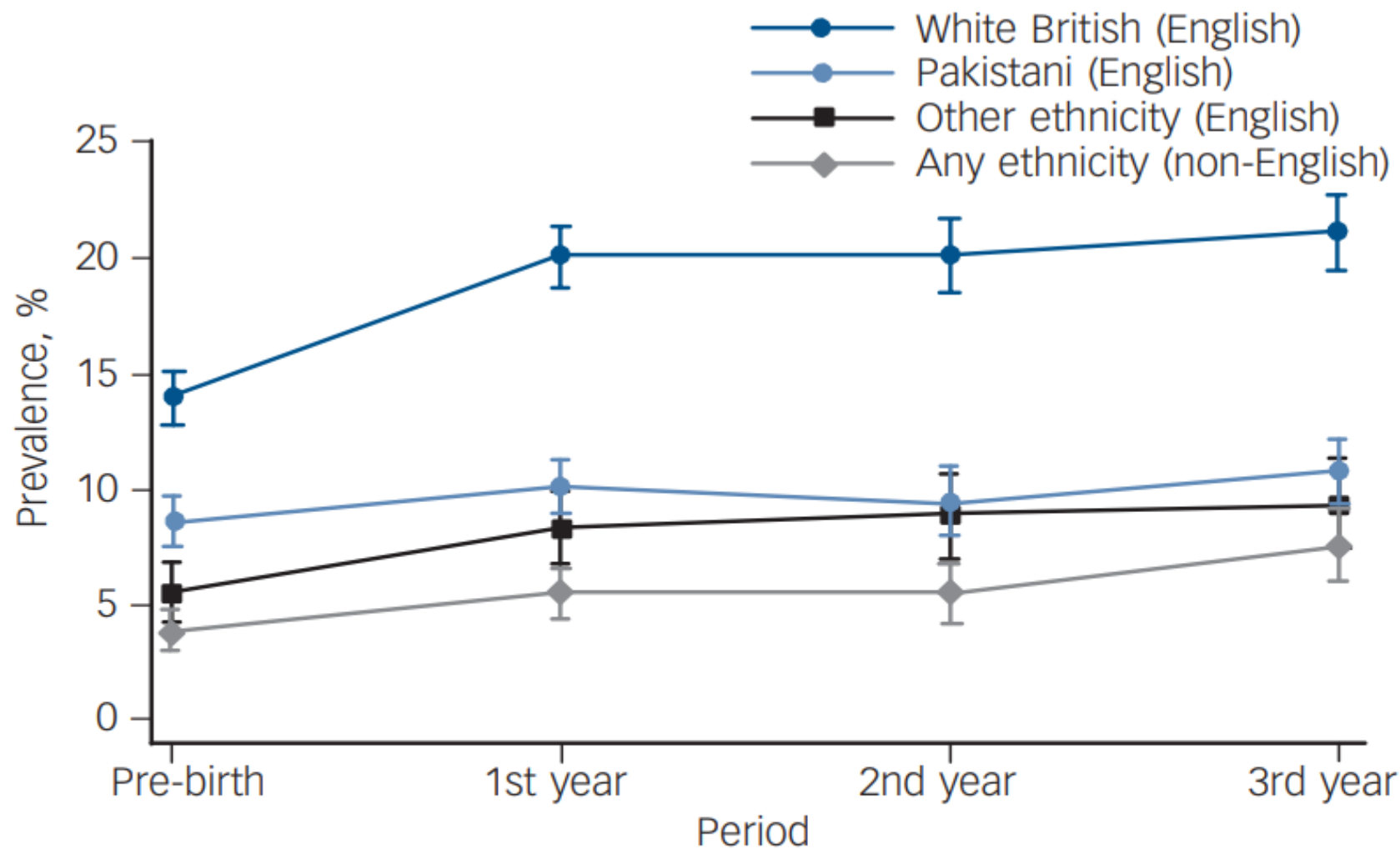
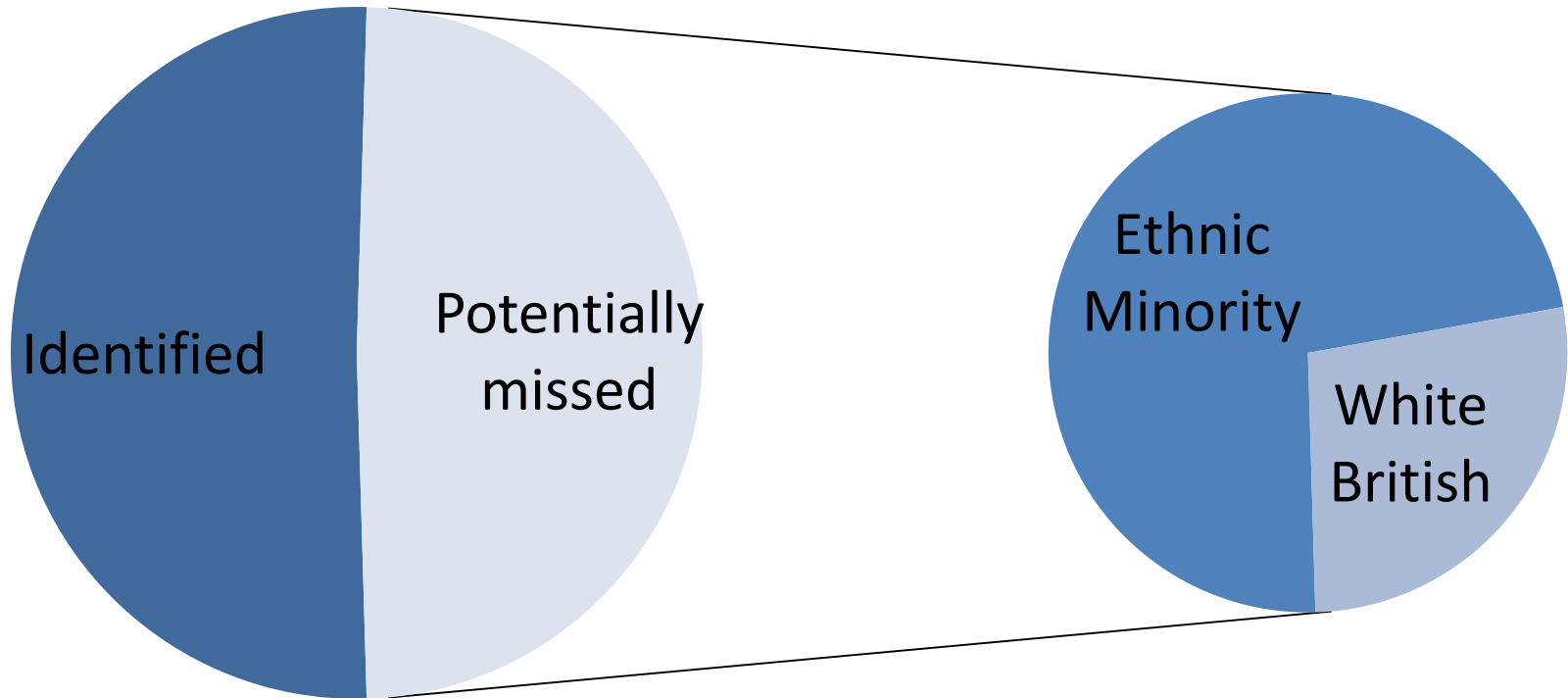


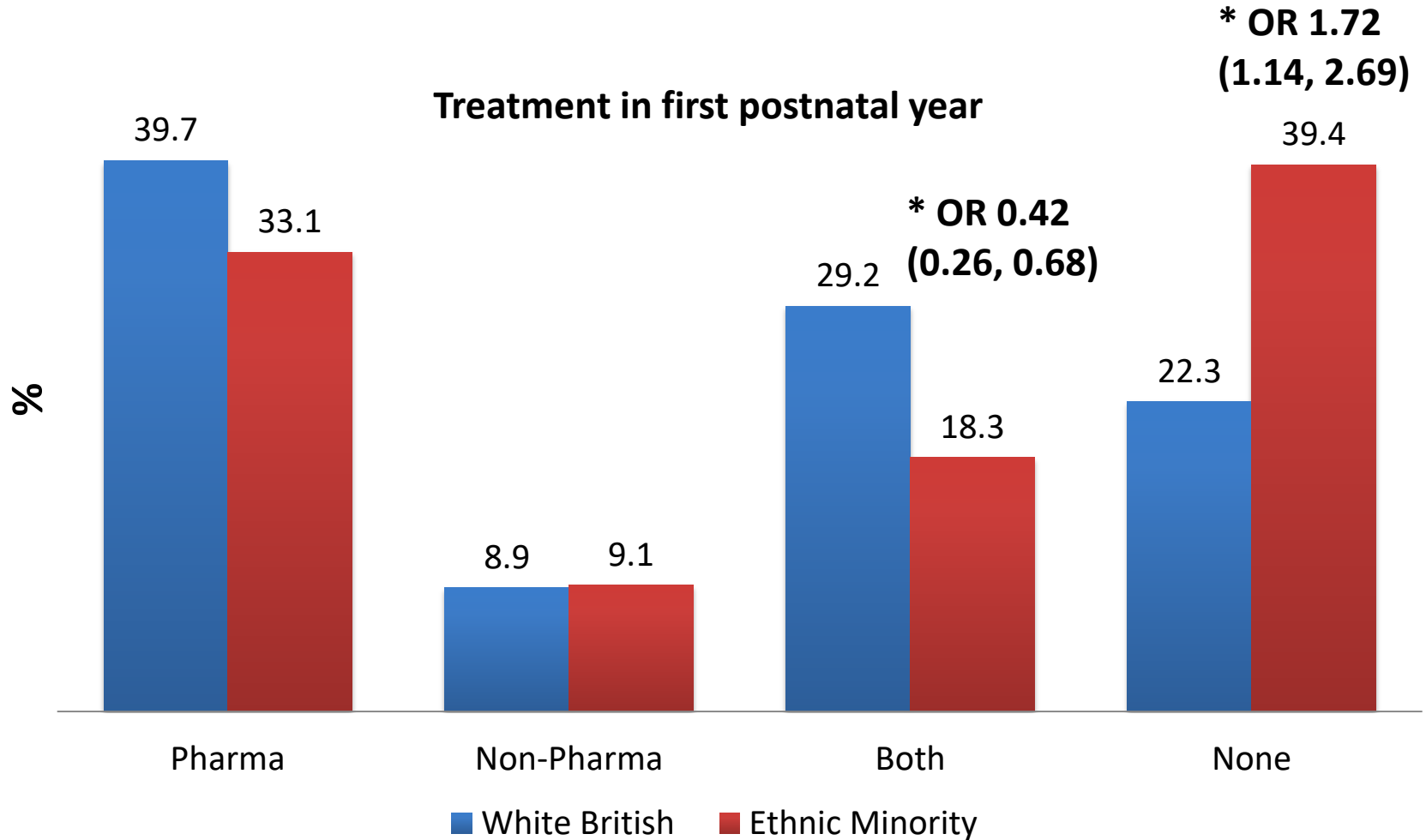
Fig. 3 Period prevalence of identified common mental disorders.

Pre-birth and first year $n = 8991$; second and third year $n = 6197$.

Are we identifying all cases?



Are we treating all identified cases?





OPEN ACCESS

The association between green space and depressive symptoms in pregnant women: moderating roles of socioeconomic status and physical activity

R R C McEachan,¹ S L Prady,² G Smith,³ L Fairley,⁴ B Cabieses,^{1,5} C Gidlow,⁶ J Wright,¹ P Dadvand,⁷ D van Gent,⁷ M J Nieuwenhuijsen⁷

► Additional material is published online only. To view please visit the journal online (<http://dx.doi.org/10.1136/jech-2015-205954>)

ABSTRACT

Background The current study explored the association between green space and depression in a deprived, multiethnic sample of pregnant women, and examined

and mental health in adults has been attributed, in part, to inconsistent and limited tools to measure green space.⁹ The 'Normalised Difference Vegetation Index' (NDVI), an assessment of the



Environment International

Volume 71, October 2014, Pages 101-108



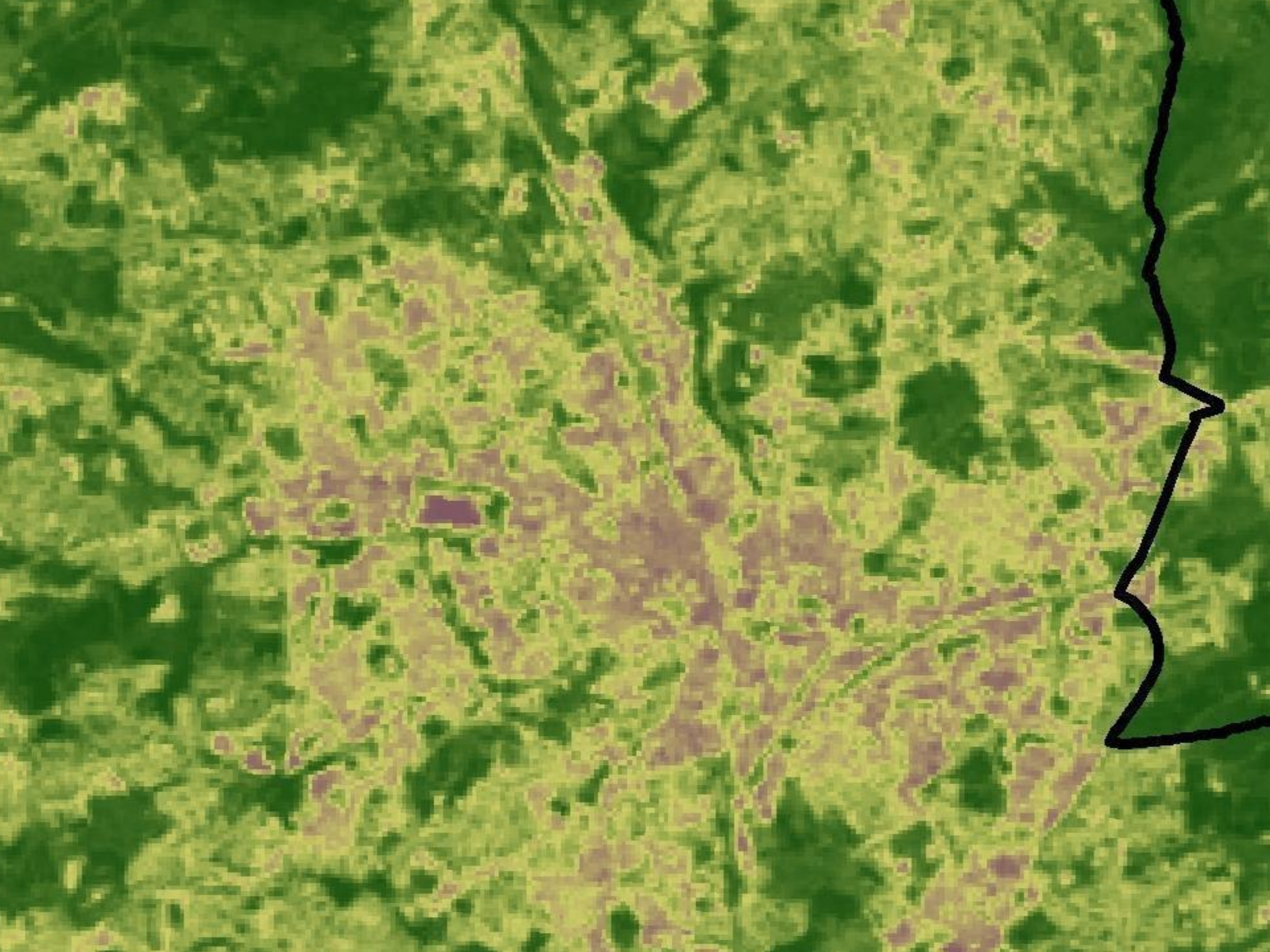
Inequality, green spaces, and pregnant women: Roles of ethnicity and individual and neighbourhood socioeconomic status

Payam Dadvand^{a, b, c}✉, John Wright^d, David Martinez^{a, b, c}, Xavier Basagaña^{a, b, c}, Rosemary R.C. McEachan^d, Marta Cirach^{a, b, c}, Christopher J. Gidlow^e, Kees de Hoogh^f, Regina Gražulevičienė^g, Mark J. Nieuwenhuijsen^{a, b, c}

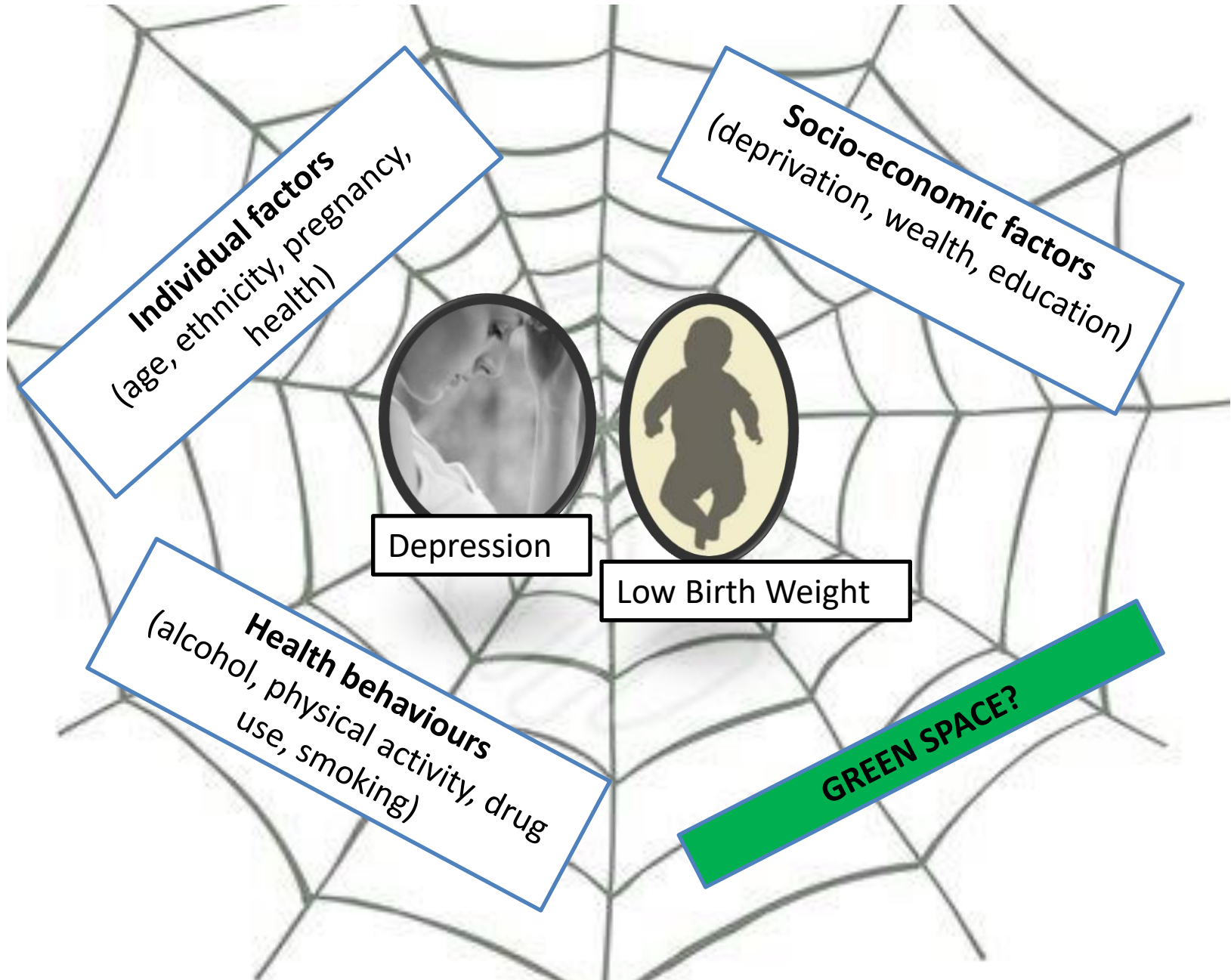
✉ [Show more](#)

<https://doi.org/10.1016/j.envint.2014.06.010>

[Get rights and content](#)



Disentangling effects of green space



Exposure



Outcome



Outcome



Greenest area 18-23% *less* likely to report depression

But
Only for those in more deprived groups
Stronger for those already active

More **green** --- healthier weight
10% increase --- ~16-22g

But
Only for White British NOT South Asian women

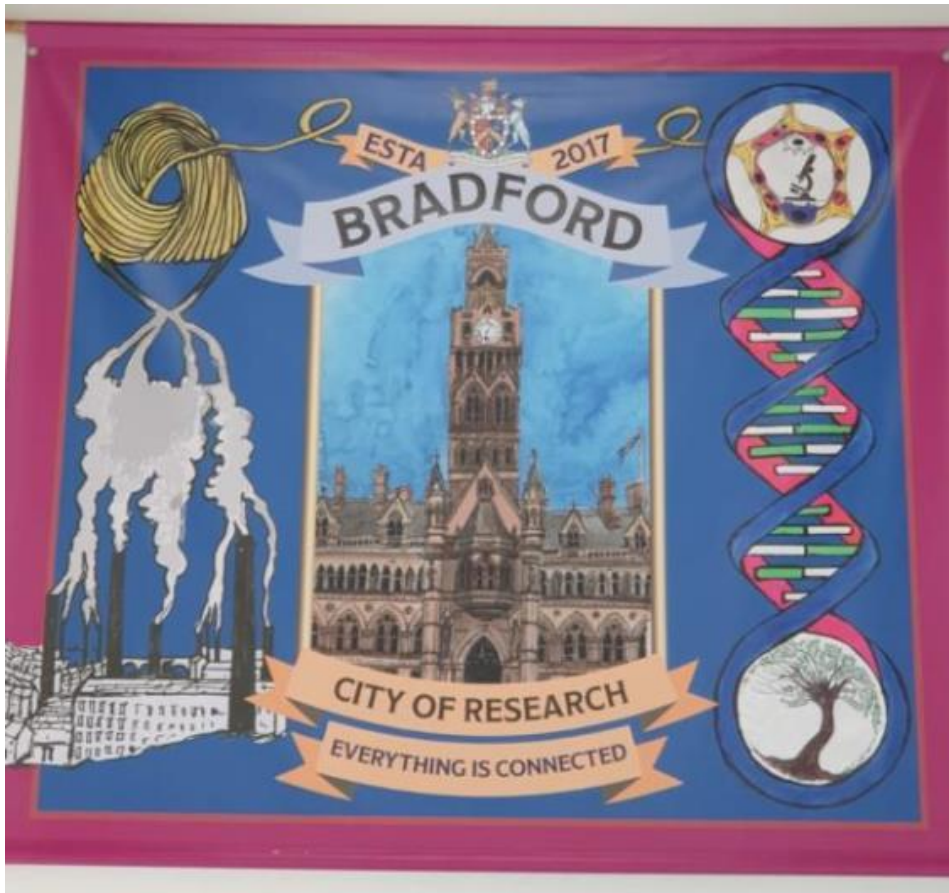
Dadvand P, et al. Environ Int. 2014;71:101-8.

McEachan, R, et al. JECH. 2015;

Our **vision** is to promote a
healthier, fairer future for
children



Are you in?!



<https://borninbradford.nhs.uk/research/how-to-access-data/>



Bradford – City of Research (and flat caps)